

DISCUSSION PAPERS

No 155

**A quantitative analysis of agricultural
production in Greece, 2004-2016**

Prodromos Prodromidis and Leonidas Zangelidis

June 2020

Pródromos Prodromídís

Senior Research Fellow

Centre of Planning and Economic Research (KEPE), Athens, Greece

E-mail: pjprodr@kepe.gr, Tel.: (+30) 210 3676412

Leonidas Zangelidis

KEPE Intern

Postgraduate student, Athens University of Economics and Business, Athens Greece

**A quantitative analysis of agricultural
production in Greece, 2004-2016**

Copyright 2020
by the Centre of Planning and Economic Research
11, Amerikis Street, 106 72 Athens, Greece

www.kepe.gr

Opinions or value judgements expressed in this paper
are those of the authors and do not necessarily
represent those of the Centre of Planning
and Economic Research.

CENTRE OF PLANNING AND ECONOMIC RESEARCH

The Centre was initially established as a research unit, under the title “Centre of Economic Research”, in 1959. Its primary aims were the scientific study of the problems of the Greek economy, the encouragement of economic research and cooperation with other scientific institutions.

In 1964, the Centre acquired its present name and organizational structure, with the following additional objectives: first, the preparation of short, medium and long-term development plans, including plans for local and regional development as well as public investment plans, in accordance with guidelines laid down by the Government; second, the analysis of current developments in the Greek economy along with appropriate short and medium-term forecasts, the formulation of proposals for stabilization and development policies; and, third, the additional education of young economists, particularly in the fields of planning and economic development.

Today, KEPE is the largest economics research institute in Greece, focuses on applied research projects concerning the Greek economy and provides technical advice to the Greek government and the country’s regional authorities on economic and social policy issues.

In the context of these activities, KEPE has issued more than 650 publications since its inception, and currently produces several series of publications, notably the *Studies*, which are research monographs; *Reports* on applied economic issues concerning sectoral and regional problems; *Discussion Papers* that relate to ongoing research projects. *KEPE* also publishes a tri-annual review entitled *Greek Economic Outlook*, which focuses on issues of current economic interest for Greece.

**A QUANTITATIVE ANALYSIS OF
AGRICULTURAL PRODUCTION IN GREECE, 2004-2016 •**

ABSTRACT

The paper looks into agricultural production at the subnational level in Greece, across four regions (Thessaly, north Greece, west Greece, the rest of Greece) from the EU's 2003-04 CAP reform and 2004 enlargement by ten member-states to the end of the country's long economic recession in 2016. It relies on annual observations running from 2004 to 2016, supplied by the EU Commission, and plots the evolution of output, of labor, of capital, of the land-area used, of energy costs, of the respective average productivities, and of the output to energy costs ratio. In addition, it econometrically estimates the impact of the said inputs on output, and the magnitude of multifactor productivity (i.e., of entrepreneurship, technology and of the impact of the factors not considered in the regression) in a translog production function framework. Alternative specifications are considered and all regressors are rendered uncorrelated to each other so as to deal with heteroscedasticity. The results suggest that labor and the cost of energy are the main explanatory factors. However, their impact along with the size of multifactor productivity vary across space. This implies that there is room for spatially differentiated interventions.

Keywords: Cobb-Douglas, translog, agricultural production, productivity, regional analysis, Greece

• The paper has benefited from comments made to an earlier version by participants at the KEPE seminar, participants at the 32nd Panhellenic Statistics Conference, and two anonymous reviewers: one assigned by KEPE and one assigned by the Greek Statistical Institute.

ΠΟΣΟΤΙΚΗ ΑΝΑΛΥΣΗ ΤΗΣ ΑΓΡΟΤΙΚΗΣ ΠΑΡΑΓΩΓΗΣ ΣΤΗΝ ΕΛΛΑΔΑ, 2004-2016

Λεωνίδας Ζαγγελίδης,* Πρόδρομος Προδρομίδης♦

Εξετάζεται η αγροτική παραγωγή στην Ελλάδα κατά το χρονικό διάστημα 2004-16, ήτοι από την εποχή της διεύρυνσης της ΕΕ κατά δέκα κράτη-μέλη και την μεταρρύθμιση της κοινή αγροτικής πολιτικής ως το τέλος της πολυετούς ύφεσης που έπληξε την χώρα: Διάστημα κατά το οποίο η ακαθάριστη προστιθέμενη αξία της αγροτικής παραγωγής σε σταθερές τιμές στην Ελλάδα μειώθηκε κατά περίπου 19%, ενώ στο σύνολο των 15 παλαιών κρατών-μελών αυξήθηκε κατά περίπου 1% και στο σύνολο των 10 νέων κρατών-μελών αυξήθηκε κατά περίπου 4%. Συγχρόνως οι ανθρωποώρες εργασίας στον αγροτικό τομέα στην Ελλάδα μειώθηκαν κατά 32%, στο σύνολο των 15 παλαιών κρατών-μελών κατά 19% και στο σύνολο των δέκα νέων κρατών-μελών κατά 23%. Εν ολίγοις, πρόκειται για μια περίοδο στην διάρκεια της οποίας ο αγροτικός τομέας της χώρας απέκλινε από την γενική κατεύθυνση των άλλων μελών της ΕΕ της εποχής.

Για την διερεύνηση των εξελίξεων επιχειρείται η ανάλυση της αγροτικής παραγωγής σε όρους εργασίας, γης, κεφαλαίου και άλλων εισροών, στην βάση 13 ετησίων παρατηρήσεων για την μέση επιχείρηση (εκμετάλλευση) του κλάδου σε τέσσερις διαιρέσεις της χώρας –συνολικά (13 x 4 =) 52 παρατηρήσεων– που παρέχει η Ευρωπαϊκή Επιτροπή. Οι τέσσερις διαιρέσεις είναι: (α) η Θεσσαλία με τις Β. Σποράδες, (β) η βόρεια χώρα (από την Δ. Μακεδονία ως και την Δ. Θράκη, με την Θάσο και την Σαμοθράκη), (γ) η δυτική χώρα (από την Ήπειρο και τις Ιονίους Νήσους ως την Πελοπόννησο και τα Δυτικά Γεράνεια, άνευ της Τροιζηνίας), (δ) η υπόλοιπη χώρα (από την Ακαρνανία ως τις νήσους του ανατολικού Αιγαίου και την Κρήτη). Σημειώνεται ότι η χωρική οργάνωση είναι της βάσεως δεδομένων: όχι των συγγραφέων.

Αρχικώς, καταγράφονται οι εξελίξεις των βασικών μεταβλητών και της παραγωγικότητας ανά μέση εκμετάλλευση στην κάθε περιοχή και διαπιστώνεται ότι στην διάρκεια της υπό εξέταση περιόδου η μέση εκμετάλλευση μείωσε την χρήση της εργασίας και αύξησε το κεφάλαιο, την χρήση της γης, τις δαπάνες για ενέργεια και την παραγωγή, με αποτέλεσμα (α) να μεταβεί από μια κατάσταση μεγαλύτερης εντάσεως εργασίας (μικρότερης εντάσεως κεφαλαίου) σε μια κατάσταση μικρότερης εντάσεως εργασίας (μεγαλύτερης εντάσεως κεφαλαίου), (β) η παραγωγικότητα εργασίας να αυξηθεί και (γ) η παραγωγικότητα κεφαλαίου και γης και ο λόγος του προϊόντος προς την ενεργειακή δαπάνη να μειωθούν. Στην βόρεια χώρα η μέση εκμετάλλευση φαίνεται να λειτουργούσε με περισσότερα μηχανήματα, υψηλότερη παραγωγικότητα εργασίας και αυξημένες

* Ασκούμενος στο ΚΕΠΕ. Μεταπτυχιακός φοιτητής στο Οικονομικό Πανεπιστήμιο Αθηνών.

♦ Ερευνητής Α' Βαθμίδος του ΚΕΠΕ. Αμερικής 11, Αθήνα, 10672. E-mail: rjprodr@kepe.gr. Τηλ. 210-3676412.

δαπάνες για ζωοτροφές, σπόρους, λιπάσματα και τέτοιες εισροές. Στην δυτική χώρα η μέση εκμετάλλευση φαίνεται να διέθετε γη υψηλότερης αξίας και να λειτουργούσε με υψηλότερο λόγο προϊόντος προς ενεργειακή δαπάνη, καθώς και υψηλότερη παραγωγικότητα κεφαλαίου ως το 2010. Στην Θεσσαλία φαίνεται να λειτουργούσε με υψηλότερη παραγωγικότητα εργασίας κατά το 2004-06 και 2012-16 και στην Θεσσαλία και την βόρεια χώρα φαίνεται να διέθετε περισσότερη γη, να παράγαγε περισσότερη αξία και να δαπανούσε περισσότερα χρήματα σε ενέργεια. Στην υπόλοιπη χώρα εν γένει λειτουργούσε με περισσότερη εργασία, περισσότερα κτίρια, περισσότερο ζωικό κεφάλαιο και πραγματοποιούσε περισσότερες επενδύσεις σε κτίρια και μηχανήματα· ενώ τόσο στην Θεσσαλία όσο και στην υπόλοιπη χώρα φαίνεται να παρουσίαζε υψηλότερη παραγωγικότητα κεφαλαίου από το 2011 και εξής.

Επίσης επιχειρούνται οικονομετρικές αναλύσεις τόσο σταθερών και τυχαίων επιδράσεων όσο και με την χρήση χωρικών ψευδομεταβλητών για την εκτίμηση (i) των παραμέτρων των εν λόγω εισροών και (ii) του μεγέθους της επιχειρηματικότητας, της τεχνολογίας και των μεταβλητών που δεν υπεισέρχονται στην παλινδρόμηση (δηλ. της πολυπαραγοντικής παραγωγικότητας) με τρεις τρόπους: (α) με αφαίρεση της τάσεως, (β) με εκτίμηση της τάσεως, (γ) με πρώτες διαφορές, στο πλαίσιο αφενός μιας διαλογαριθμικής εκφράσεως (της οποίας η εκτεταμένη και ευρέως γνωστή στους οικονομολόγους συνάρτηση Cobb-Douglas συνιστά ειδική περίπτωση), αφετέρου ενός γραμμικού μοντέλου που βασίζεται στις πρώτες διαφορές των μεγεθών, το οποίο θεωρητικά δεν συνάδει με την Cobb-Douglas και εμπειρικά παρέχει το χαμηλότερο R^2 (ήτοι, μικρότερη δυνατότητα εξηγήσεως της συνολικής μεταβλητικότητας των στοιχείων). Σε αντιδιαστολή, ο πρώτος τρόπος παρέχει την καλύτερη εξήγηση της συνολικής μεταβλητικότητας των στοιχείων. Για να αντιμετωπιστεί η ετεροσκεδαστικότητα, οι αναλύσεις εκτελούνται με ανθεκτικούς εκτιμητές και για να εξασφαλιστεί η ανεξαρτησία των ερμηνευτικών μεταβλητών αυτές καθίστανται γραμμικά ανεξάρτητες μεταξύ τους. Τα ευρήματα των αναλύσεων υποδηλώνουν ότι τόσο η πολυπαραγοντική παραγωγικότητα όσο και οι επιδράσεις της εργασίας και της ενέργειας (αναδύονται ως βασικοί ερμηνευτικοί παράγοντες) διαφοροποιούνται στον χώρο υποδηλώνοντας την δυνατότητα –ακόμα και την χρησιμότητα– ασκήσεως χωρικά διαφοροποιημένων αναπτυξιακών πολιτικών. Ιδίως η ανάλυση με το υψηλότερο R^2 , καθώς και παραλλαγές της, εντοπίζουν την παρουσία υψηλής πολυπαραγοντικής παραγωγικότητας στην Θεσσαλία. Συνεπώς, υφίσταται μια προοπτική μεταγίσεως πρακτικών από εκεί στις υπόλοιπες περιοχές. Επίσης επιβεβαιώνουν (α) ότι μια οριακή αύξηση (μείωση) στην απασχόληση αύξανε (μείωνε) την παραγωγή στην νότια ηπειρωτική χώρα από την Ακαρνανία ως τις νήσους του ανατολικού Αιγαίου και την Κρήτη, καθώς και (β) ότι η Θεσσαλία λειτουργούσε υπό φθίνουσες αποδόσεις κλίμακος, με αποτέλεσμα ο διπλασιασμός των εισροών να μην επιτυγχάνει διπλασιασμό ή υπερδιπλασιασμό του

προϊόντος, αλλά *–μάλλον φυσιολογικά και αναμενόμενα–* κάτι λιγότερο: υποδιπλασιασμό του προϊόντος.

1. INTRODUCTION

The purpose of the paper is to study the economics of production in the agricultural sector in Greece across regions –north Greece, west Greece, Thessaly, the rest of Greece– from 2004 to 2016. That is, from the time of the EU’s largest expansion and CAP reform to the end of the country’s 2009-16 economic recession.¹ According to Eurostat figures, during these thirteen years both the gross value added at constant prices and labor in terms of work units in Greece decreased by approximately 19 and 32%, respectively. Among the EU’s fifteen older member states the former increased by approximately 1% and the latter decreased by 19%; while among the EU’s ten newer member states the former increased by approximately 4%, and the latter decreased by 23%.² Consequently, sectoral figures in Greece seem to have deviated considerably from the general direction of the other EU members at the time, and from the previous pattern of relative of slow gradual increase or stability (Prodromidis, 2000). Interestingly, the agricultural sector has been seen as a fallback during Greece’s economic recession (e.g., Giannakis and Bruggeman, 2017.) To probe what transpired the paper uses the annual input and output data associated with the average farm in each of Greece’s four territorial divisions, as provided by the European Commission’s Farm Accountancy Data Network (FADN).³

Similar agricultural production issues have been studied, and analyses been carried out in a number of countries in recent years (e.g., Ghate et al. 2016; Nowak and Kijek, 2016; Zwolak, 2017; Adom et al. 2018; European Commission, 2018; Güvercin, 2018; Jiménez et al., 2018; Ogunlesi et al., 2018; Castro et al., 2019; Giang et al., 2019; Roy, 2019; and others) on the basis of aggregated data; and many more have focused on individual subsectors, products, regions or subregions. This is also the case in Greece. Quantitative analyses of the sector’s aggregate output on the basis of inputs are few and far between. One prepared by Nastis et al. (2012) was performed at the national level, in a Cobb-Douglas econometric framework, and covered a seventeen-year period: from 1980 to 2007.

The rest of the paper is organized as follows: Section 2 describes the data. Section 3 discusses modeling issues for the econometric estimation of the sector’s production function. Section 4 supplies the empirical findings; and Section 5 provides the conclusions.

¹ The collective agricultural value of the ten new member-states was 2-3 times that of Greece. The CAP reform of 2003-05 decoupled direct payments to farmers from production. The CAP reform of 2013-14 aimed to strengthen the competitiveness of the sector, promote sustainable farming and innovation, support jobs and growth in rural areas and move financial assistance towards the productive use of land.

² The figures were accessed via <https://ec.europa.eu/eurostat/data/database> > ‘Agriculture, forestry and fisheries’ > ‘Agriculture’ > ‘Economic accounts for agriculture’ and ‘Agriculture input statistics’, last updated, respectively, in March and February of 2020.

³ The sample is quite reasonable, involving, for instance, 4,253 (4,254) farms representing 390,320 (347,339) farms in 2004 (2014).

2. DATA DESCRIPTION

In theory, the level of production (output), Q , depends on the quantity and quality of inputs, the way inputs are combined, and the factors shaping people's demand. The inputs consist of labor (specialized and/or unskilled), L ; manmade capital (the stock of buildings, K_1 , and machines, K_2), K ; the land (earth's surface in the broad sense: area size and configuration, water, flora-fauna-minerals etc.) in terms either of value, T_a , or size (hectares) T_b ; energy, E , in monetary figures; and various other materials used in the process (all obtained from land, labor and capital), M .

The descriptive statistics of the FADN data are provided in Table 1, and suggest that during the time in question, on average, holdings in: (i) The north part of the country (running from West Macedonia to West Thrace, along with the islands of Thasos and Samothraki) featured more K_2 and T_b , a higher value of livestock, and higher costs for E , feeds, seeds, fertilizers, and such inputs. (ii) The west part of the country (spanning Epiros, the Ionian islands and the Peloponnese) were associated with higher T_a . (iii) Thessaly (in central Greece) and north Greece provided more Q . (iv) The rest of Greece (i.e., the part of the mainland situated south of Epiros and Thessaly, and north of the Peloponnese, plus Crete and the other Aegean islands) relied on more L , used more K_1 , livestock (in terms of heads), and carried out more investments in buildings and machinery.

Table 1. *Descriptive statistics of agricultural production in Greece, 2004-16 (average holding, annual data)*

Variables	north country ⁱ		west country ⁱⁱ		Thessaly ⁱⁱⁱ		Rest of Greece	
	mean	std.dev	mean	std.dev	mean	std.dev	mean	std.dev
1. Output (Q) in €	23904	1864	20731	1627	23949	1785	22201	1403
2. Labor (L) in full-time person equivalent (FTPE)	1.13	0.09	1.16	0.19	1.18	0.12	1.35	0.10
3. Terrain (T)								
a. Value in € (T_a)	51672	9370	77158	19999	68001	5196	73184	9601
b. Utilized area in hectares (T_b)	11.31	0.85	6.34	1.00	10.48	0.97	7.85	1.80
c. Value per hectare: (a)/(b)	4547	690.0	12036	1610.9	6535	682	9551	1217
4. Capital, investment, costs in €								
a. Stock of buildings (K_1)	8086	1104	7467	3522	5474	1071	8734	1654
b. Stock of machinery (K_2)	24868	6300	12690	4810	20189	5840	13519	3404
c. New buildings-machinery (I)	677	175	526	120	607	380	942	191
d. Costs for feeds, seeds etc. (M)	8251	935	5011	874	7470	755	6014	470
e. Breeding livestock converted in head units	6.10	0.56	5.30	0.52	6.37	0.64	7.16	0.35
f. Breeding livestock in €	4683	6459	2894	216	4161	63	4171	174
g. Cost of energy (E) in €	2371	609	1091	332	2363	559	1489	348

Notes: ⁱ The north country consists of Western, Central and Eastern Macedonia, Western Thrace, the islands of Thasos and Samothraki.

ⁱⁱ The west country consists of Epirus, the Ionian islands, the Peloponnese (excluding Troezin), and the western Genranian mountains area.

ⁱⁱⁱ Thessaly is taken to include the (northern or Thessalian) Sporades islands.

Source: EU FADN; own calculations based on the annual data.

In addition, Figure 1, regarding the evolution of output and of the main inputs involved, and Figure 2, featuring ratios of the two, reveal that:

- a. Q generally increased over time; was higher in north Greece and Thessaly, and lower in west Greece and the rest of Greece. (In the latter two regions it evolved very much the same from 2008 onwards.)
- b. L generally decreased over time; was lower in Thessaly during 2004-2006, in north Greece during 2007-2010, in west Greece during 2011-6, and higher in the rest of Greece.
- c. K increased over time, much in the same manner across all regions, and was higher in north Greece, modest in Thessaly, and lower in west Greece during 2004-10, and in both west Greece and the rest of Greece during 2011-16.⁴ Given L 's decrease and K 's increase, obviously the sector moved from a more labor-intensive (less capital-intensive) to a less labor-intensive (more capital-intensive) state.
- d. T_b generally increased over time; was lower in west Greece throughout the period, and in the rest of Greece during 2004-08; and higher in north Greece, Thessaly, and (at the end of the period) in the rest of Greece.
- e. The cost of E generally increased over time; was higher in north Greece and Thessaly, lower in west Greece, and modest in the rest of Greece.
- f. Labor productivity (Q/L) increased over time; was higher in north Greece, in Thessaly during 2004-6 and 2012-16, and in west Greece during 2012-16, modest in Thessaly during 2007-11, and in west Greece during 2010-11, and lower in west Greece during 2004-10, and in the rest of Greece.
- g. Capital productivity (Q/K) decreased over time; was lower in north Greece, and higher in west Greece up to 2010, and subsequently in Thessaly and the rest of Greece.
- h. Land productivity (Q/T_b) generally decreased over time; was higher in west Greece from 2008 on, and the rest of Greece during 2004-8, modest in the rest of Greece during 2009-12, and lower in north Greece and Thessaly throughout the period, and in the rest of Greece during 2013-6.
- i. The proxy for energy productivity (Q/E cost) decreased over time; was higher in west Greece, lower in Thessaly and north Greece (it evolved very much the same), and modest in the rest of Greece.

⁴ It seems that in 2010-11, the government attempted to direct to the primary sector an exceptional amount of EU-funding (Giouroukeli, 2010). The 75% increase observed between 2010 and 2011 in western Greece corresponds to the largest change observed across all inputs.

Figure 1. Agricultural inputs and output in Greece, 2004-16 (average holding, annual data)

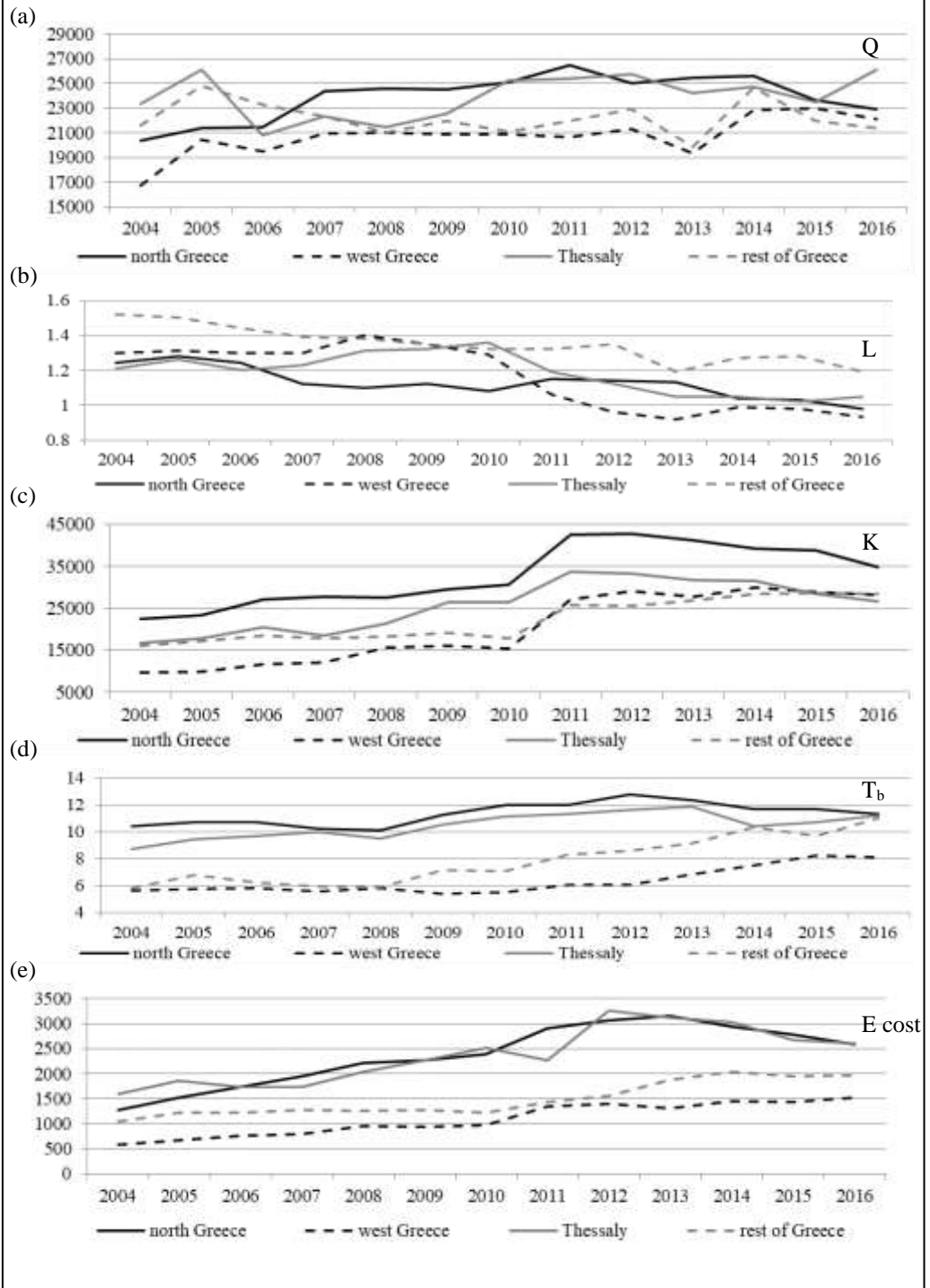
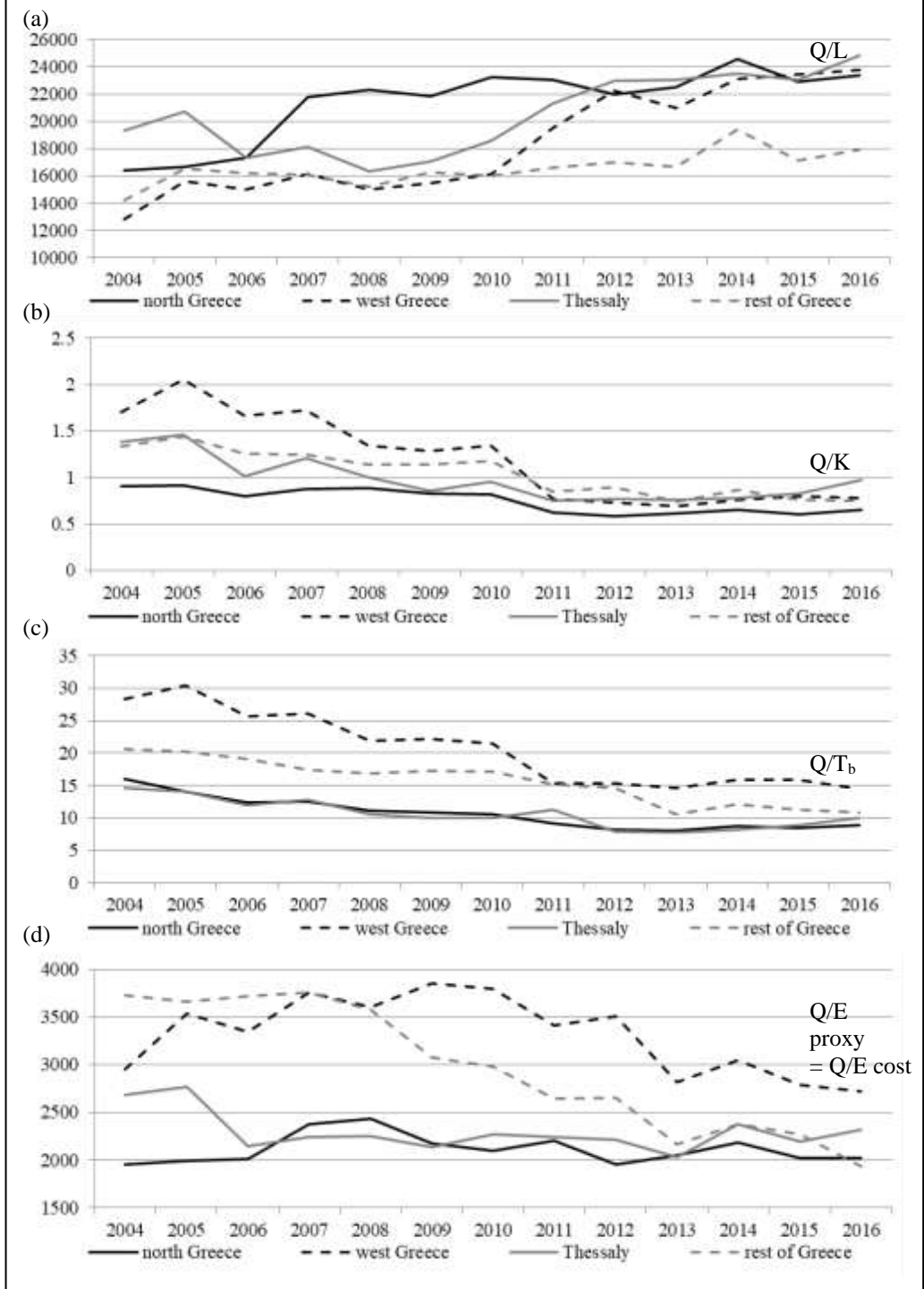


Figure 2. Productivity in agricultural across Greece, 2004-16 (average holding, annual data)



3. MODELING ISSUES

To properly look into and, especially, isolate the impact of these inputs on production we turn to econometrics. First, we select a model that rules out both production on the basis of a single input and any requirement the input effects (coefficients or parameters) add up to a certain number. The simplest approach is to employ a transcendental logarithmic (or translog) production function with a linear or non-linear time-trend (Tzouvelekas, 2000). It very much recalls the Cobb Douglas (CD) production function –the most ubiquitous production function in theoretical and empirical analyses (Charnes et al., 1976; Felipe and Adams, 2005; Biddle, 2011)– though it is much more flexible than the CD or the extended CD expression. (Alternatively, the CD function and its variants are *nested* translog functions.)

Given the available inputs, the extended CD production function is of the form:

$$Q = A L^a K^b T^c E^d M^g u, \quad (1)$$

with u denoting the error term; the other lower case letters standing for input coefficients; the five upper case letters, from L to M , standing for the inputs; and A standing for multifactor productivity (MFP), i.e., the element that captures (a) the impact of entrepreneurship and technology (E&T) in combining the inputs involved, as well as (b) the impact of other factors not specified in the expression (e.g., Chiang, 1984; Duffy and Papageorgiou, 2000; Erken et al., 2016).

In this context, the dependent variable, Q , is determined by the five independent variables, namely, L , K , T , E , M ; and the unknown terms (A , and the exponents) are estimated econometrically, simultaneously, on the basis of the known values of the dependent and independent variables. The exponents of L and K and of the other inputs are used to calculate the *marginal productivities* of the respective inputs, for instance, the marginal productivity of labor, aQ/L , and the marginal productivity of capital, bQ/K . In addition, if the sum of the exponents equals one, then the production function exhibits constant *returns to scale*. This means that doubling the use of the inputs will double output. Conversely, if the sum of the exponents exceeds (is below) one, then the production function exhibits increasing (decreasing) returns to scale. This means that doubling the use of the inputs will more than double (less than double) output.

As the data are cross-sectional and longitudinal, each of the four regions and each of the thirteen years are indicated with i ($=1, \dots, 4$), and t ($=1, \dots, 13$), respectively:

$$Q_{it} = A_{it} L_{it}^a K_{it}^b T_{it}^c E_{it}^d M_{it}^g u_{it}. \quad (2)$$

Following the example of J. Tinbergen (Nobel Prize laureate of 1969), to allow A_{it} to vary over time (Wallis, 1973), A_{it} is specified as $A_{it} e^{\lambda it}$, with λ representing the trend's slope:

$$Q_{it} = A_{it} e^{\lambda it} L_{it}^a K_{it}^b T_{it}^c E_{it}^d M_{it}^g u_{it}. \quad (3)$$

Equivalently:

$$\ln Q_{it} = \ln A_{it} + \lambda_{it} + a \ln L_{it} + b \ln K_{it} + c \ln T_{it} + d \ln E_{it} + g \ln M_{it} + u_{it}. \quad (4)$$

In addition, in order to capture input-interaction effects and each input's rate of change, additional terms in multiplicative and squared value form are considered (e.g., Lyu, 1984).

In the case of incorporating the squared value of certain inputs, the expression takes the following form when the coefficients turn out to be statistically significant at the 5% level:

$$\ln Q_{it} = \ln A_{it} + \lambda_{it} + a \ln L_{it} + h(\ln L_{it})^2 + b \ln K_{it} + k(\ln K_{it})^2 + c \ln T_{it} + d \ln E_{it} + m(\ln E_{it})^2 + g \ln M_{it} + u_{it}. \quad (5)$$

In recent years, Kea and Pich (2016), Mohamed et al. (2016), Yang et al. (2016), Lachaud (2017), Schettini and Azzoni (2018), Wree (2018), Bai et al. (2019), Cai and Yan (2019), Gong et al. (2019), Njuki and Bravo-Ureta (2019), and others, analyzed agricultural production in the same manner. In the case considered hereinafter, the recovery of low p-values for the coefficients of the aforesaid squared values and of the trend, suggests that the expression is more appropriate compared to its extended CD counterpart. However, the employment of a full-blown translog formula with additional product terms is tempered by the practical need to conserve degrees of freedom (DoF).

Another issue to address is stationarity (or non-stationarity). That is, if the mean and variance of the variables involved do not vary (or vary) over time.⁵ To deal with non-stationarity one may (Maddala, 2001; Gujarati, 1995):

(a) Incorporate in the analysis –in the right-hand side of expression (2) to be exact– a trend term, t .

As already mentioned, the term is part of expression (4). (See Model A, hereinafter.)

(b) Detrend the variables involved. (See Model B.)

(c) Rely on successive differences. (See Models C-D.)

All three are technically simple, though, in order to preserve DoF, we will not proceed beyond first differences in the case of (c).⁶

Last but not least, all explanatory variables are made linearly independent of one another. In case the terms are ordered as above: (a) $\ln L$ is made linearly independent from t ; (b) $\ln K$ is made linearly independent from t and $\ln L$; (c) $\ln T$ is made linearly independent from t , $\ln L$ and $\ln K$; (d) $\ln E$ is made linearly independent from t , $\ln L$, $\ln K$, and $\ln T$; $\ln M$ is made linearly independent from all the rest; thus, satisfying a basic assumption regarding the independence of regressors (e.g., by Economou et. al., 2019, and the literature cited therein). In essence, instead of regressing $\ln Q$ on

⁵ This is important as certain analytical tools and models employed in a number of studies –not in this one– rely on the mean and variance being fixed. Short time series are not typically tested for non-stationarity, though for $t \geq 10$ testing is possible (e.g., by Hlouskova and Wagner, 2006).

⁶ The findings of the relevant stationarity tests are supplied in the notes of Tables 2-5.

arguments t , $\ln L_{it}$, $\ln K_{it}$, $\ln T_{it}$, $\ln E_{it}$, and $\ln M_{it}$, initially $\ln L_{it}$ is regressed on t , an $\ln L_{it}'$ is predicted, and an orthogonal $\ln L_{it}^{\circ} = \ln L_{it} - \ln L_{it}'$ is estimated; next, $\ln K_{it}$ is regressed on t and $\ln L_{it}^{\circ}$, an $\ln K_{it}'$ is predicted, and an orthogonal $\ln K_{it}^{\circ} = \ln K_{it} - \ln K_{it}'$ is estimated, and so on. Thus, we may explain $\ln Q$ in terms of t , $\ln L_{it}^{\circ}$, $\ln K_{it}^{\circ}$, and additional regressors estimated in the same manner. Consequently, in the context of Tables 2-5, the second regressor is independent of the first regressor, the third regressor is independent of the former two, and so on. Indeed, since in the first column of Table 3 the second regressor (lines 6-9) is t , all other explanatory variables (regarding the inputs used) are made linearly independent of t . Obviously, the order of the regressors employed affects the size of the estimated parameter (coefficient) for if the order was different, a different number of effects would be subtracted from each explanatory variable. In the analyses that follow labor is ordered prior to other inputs, and all orders of other inputs are considered in each model. We provide the specifications associated with the highest levels of fitness.

4. EMPIRICAL RESULTS

The analysis is carried out in Stata. As already mentioned, alternate models are considered:

- Model A is based on expression (5).
- Model B is a variant of expression (5) without a trend (for it employs detrended variables.)⁷
- Model C is based on the first differences of expression (2).⁸
- Model D is a linear arrangement of the first differences of the terms involved in expression (2).

It is undertaken in order to provide a sense of how things might look like in a perfect input substitution setting,⁹ outside the extended CD or translog framework.

Each model is estimated in both panel and pooled format. In the case of the former, the random effects (RE) variant is always preferred over its fixed effects (FE) counterpart on the basis of the Hausman (1978) test;¹⁰ and in the case of the latter, spatial dummies are employed so that individual regional effects (if any) may be spotted. To deal with heteroscedasticity, all analyses are carried out with robust standard errors. (Huber, 1967; White, 1984). The best fits of the both the RE and the pooled analysis results are presented in Tables 2 and 3, respectively. By and large, they rely on L , E , and either M or T or K or its variants (K_I or investment, I).

From the RE results associated with low p-values (less than 1%), the coefficients regarding L (in Models B-D), T_a , the cost of E (Models B and D), and the cost of feeds, seeds, fertilizers etc.

⁷ These are variables regressed on t , on the basis of which the trend element is subtracted.

⁸ The product terms of expression (5) turn out to be statistically insignificant in the preliminary analysis and are abandoned.

⁹ Recent examples of such agricultural production models are provided by Wouterse (2017), Ogbuabor and Nwosu (2017), Osabohien (2018).

¹⁰ The respective p-values of the null hypotheses are 0.6138, 0.1778, 0.9830, 0.9891.

(in Model A) are associated with a positive sign; while the coefficient regarding K_I (in Model C) is perhaps associated with a negative sign (the p-value = 0,011). This suggests that, *ceteris paribus*, to increase Q it might be better if K_I were reduced.

Table 2. *Random effects GLS regressions with robust standard errors on holding output across Greece, 2004-16*

Explanatory variables	Model A log-log	Model B log-log detrended	Model C log-log first differences	Model D linearly arra- nged first differences
1 Constant	10.056	9.808	0.014	299.261
2 Labor in FTPE (L)	-0.169	0.362	0.963	17,023.100
3 Labor in FTPE, squared			4.737	66,297.340
4 Costs for feeds, seeds etc. (M)	0.316			
5 Value of land (T_a)		0.382	0.227	0.079
6 Stock of buildings (K_I)			-0.163	
7 Cost of energy	0.124	0.175		1.699
St. Dev. (u)	0	0	0	0
St. Dev. (e)	0.060	0.049	0.074	1667.042
Rho (fraction of variance due to u)	0	0	0	0
Observations (N)	52	52	48	48
Number of groups	4	4	4	4
Model fitness (R^2)				
• within	41%	25%	34%	33%
• between	100%	99%	31%	90%
• overall	64%	81%	34%	33%

Notes: The second regressor is linearly independent of the first regressor, the third regressor is linearly independent of the former two regressors, and so on. Opinions regarding the need for stationarity testing in this kind of short sample vary. When the Levin et al. (2002) test is considered the depended variables (the depended variable and two other variables) in Models C-D (Model A) turn out as non-stationary and the other variables of all Models turn out as stationary. When the Breitung (2001) and Hadri (2000) tests are considered all variables in Model A turn out as non-stationary and all variables of the other Models turn out as stationary. When the Harris and Tzavalis (1999), Im et al. (2003) test are considered one and two regressors, respectively, turn out as non-stationary in Model A, and all variables in the other Models turn out as stationary.

P-values over 0.000: Model A: (2nd line) 0.011, (7th line) 0.032. Model C: (6th line) 0.011, (5th line) 0.024, (1st line) 0.044. Model D: (5th line) 0.004, (2nd line) 0.005, (1st line) 0.020, (3rd line) 0.059. The rest are equal to 0.000.

Source: As in Table 1.

Model B exhibits the highest level of fitness; Model A exhibits a modest level of fitness, is also less likely to satisfy stationarity proponents; and both conform to the extended CD format. Model C has a typical CD component and an added component (in particular: $Q = 1.014 L^{0.963} T^{0.227} K_I^{-0.163} e^{4.737(\ln L)(\ln L)}$). Overall, the estimated coefficients of Models A and B add up to less than one, while the estimated coefficients of Model C to more than one. This suggests decreasing returns to scale (DRTS) and increasing returns to scale (IRTS), respectively. Model D is based on a linear arrangement of terms (of the sort $dQ = a dL + c dT + d dE + u$). This implies that the production function is linear and, hence, is irreconcilable with the multiplicative CD setting of expression (1).

Indeed, it suggests that inputs are perfect substitutes and, hence, allows for production entirely without L (and/or other inputs). As it is associated with the lowest R^2 , it turns out to be the weakest not only on theoretical grounds but also in terms of empirical fitness.

The pooled analysis (Table 3) provides more information at the regional level. The results associated with low p-values (less than 1%) reveal:

- Considerable E&T heterogeneity across space and time: The term associated with A_{it} is higher in Thessaly (in Models A-B), and the rest of Greece (in Model A), and increased over time in west Greece, Thessaly, and north Greece (in the latter case at decreasing rate) (in Model A).
- That the impact of L , the cost of E (in all Models), K (in Model A), the flow of investments (in Model B), and T_a (in Model D) varied across space.

As in the RE analysis, the model which is irreconcilable with the CD setting and, hence, does not fit well with economic theory (Model D) is empirically associated with the lowest R^2 . In the other three models, the estimated input coefficients—involving L and the variable associated with E (also, a good proxy for the active use of K_2) plus one other factor—seem to add up to more than one in the rest of Greece; but may or may not add to less than one in the other regions. This suggests IRTS in the former region and unclear returns to scale in the other regions. Model C recalls a likely RE result by yielding a possible negative effect for K_I in west Greece (the relevant p-value is 0.030). However, Model B is once again associated with the highest goodness of fit (91%) and more DoF vis-a-vis the other pooled data analyses carried out, so perhaps best captures and advances our understanding on how the country's agricultural production operated during the period in question. Consequently, in the following paragraphs we focus on the coefficients recovered via Model B.

According to the findings associated with p-values below 1%, *ceteris paribus*, a marginal increase in (a) L increased output in north Greece, west Greece and the rest of Greece outside Thessaly; (b) the energy bill increased output throughout the country; (c) capital investments for buildings and machinery brought output down in Thessaly, and in the rest of Greece outside the north and west country.¹¹ On the other hand, as mentioned in the beginning of the previous paragraph, Thessaly featured higher levels of MFP. In addition, the estimated input coefficients concerning Thessaly (the other three regions) add up to less (more) than one, which suggests the regional production function exhibited DRTS (IRTS).

¹¹ Conceivably due to upsets and interruptions needed for construction, assemblance, familiarization. The stock of capital is associated with an inferior fit. However, the stock of capital resurfaces as a highly relevant variable (also associated with a positive coefficient) once it is adjusted for price inflation.

Table 3. *OLS regressions with robust standard errors of pooled data on agricultural production across Greece, 2004-16*

Explanatory variables	Model A log-log with a trend term	Model B log-log detrended	Model C log-log first differences	Model D first differences
1 Constant	9.898	9.547	0.023	476.387
2 Regions I-II (north Greece, west Greece)	ref.	ref.	ref.	
3 Region III (Thessaly)		0.464	ref.	
4 Region IV (rest of Greece)		ref.	ref.	
5 Regions III-IV	0.082			
6 Time trend in region I	0.058			
7 regions II-III	0.010			
8 region IV	0.000			
9 region I squared	-0.003			
10 Labor (in work units) in region I		2.545	-0.059	-1813.958
11 regions I, III	-0.141			
12 region II	0.414			
13 regions II-III			0.533	9601.630
14 regions II, IV		1.108		
15 region III		0.037		
16 region IV	1.605		1.394	23500.970
17 region I squared		-5.538		
18 region II squared	-3.441	-0.843		
19 Cost of energy in region I			0.502	5.068
20 regions I-II, IV	0.423			
21 regions I-IV		0.344		
22 regions II-III			0.190	1.582
23 region III	0.364			
24 region IV			0.593	8.900
25 region II squared	-2.745	-4.431		
26 region IV squared	3.559			
27 Stock of capital (buildings & machinery) in regions I-II, IV	0.009			
28 region III	-0.723			
29 region III squared	3.900			
30 Investments in buildings & machinery in regions I-II		-0.158		
31 regions III-IV		-0.322		
32 region IV squared		14.990		
33 Value of terrain in region I				0.043
34 region II				0.092
35 region III				0.029
36 region IV				0.091
37 Stock of buildings in regions I, III-IV			-0.150	
38 region II			-0.453	
Observations (N)	52	52	48	48
Model fitness (R^2)	87%	91%	49%	45%

Notes: The second regressor is linearly independent of the first regressor, the third regressor is linearly independent of the former two regressors, and so on. Regions that feature similar coefficients are grouped together so as to preserve DoF. All tests mentioned in Table 2 are carried out. When the Levin et al. (2002) test is considered the dependent variable in Models A and C-D turn out as non-stationary and all other variables of all Models turn out as stationary. When the Breitung (2001) and Hadri (2000) tests are considered the dependent variable in Models A turns out as non-stationary and all other variables of all Models turn out as stationary. When the Harris and Tzavalis (1999) Im et al. (2003) test are considered P-values per model (the parentheses specify lines): A: (5), (23), (28) 0.001; (12), (26) 0.003; (16) 0.005; (25) 0.006; (18) 0.027; (11) 0.412; (8) 0.912; (27) 0.948. B: (32) 0.040; (25) 0.047; (30) 0.544; (15) 0.833. C: (16) 0.001; (24) 0.021; (13) 0.029; (1), (38) 0.030; (22) 0.141; (37) 0.262; (10) 0.751. D: (34) 0.001; (24) 0.016; (13) 0.036; (36) 0.049; (1) 0.050; (33) 0.069; (22) 0.159; (10) 0.622; (35) 0.737. The rest are equal to 0.000.

Source: As in Table 1.

Table 4 provides a variant specification of Model B in a simple multiplicative (i.e., the usual extended CD) form associated both with more DoF, and a slightly lower R^2 .¹² Again, the findings suggest E&T heterogeneity across space (higher in Thessaly), and that a marginal increase in capital investments for buildings and machinery brought output down output in Thessaly. At the same time: (i) a marginal increase in the energy bill increased output in Thessaly, (ii) a marginal increase in L increased output in the rest of Greece, and (iii) all regions operated under DRTS.

Table 4. A variant of Model B resulting from an OLS regression with robust standard errors on detrended pooled agricultural production data in Greece, 2004-16

Explanatory variables	coefficients	
1 Constant	9.791	
2 Regions I-II, V	ref	
3 Region III	0.193	<i>Note 1:</i> north Greece, west Greece, Thessaly, the rest of Greece correspond to regions 1-IV, respectively. <i>Note 2:</i> The second regressor is linearly independent of the first regressor, the third regressor is linearly independent of the former two regressors, and so on. Regions that feature similar coefficients are grouped together. All tests mentioned in Table 2 are carried out. All variables are stationary. <i>Note 3:</i> P-values (the parent-eses specify lines): (8) 0.001, (4) 0.016, (6) 0.047, (9) 0.072, (7) 0.268, (10) 0.314. The rest are equal to 0.000. <i>Source:</i> As in Table 1.
4 Labor (in work units) in regions I-III	0.130	
5 region IV	0.571	
6 Cost of energy in region I	0.479	
7 region II	0.294	
8 region III	0.314	
9 region IV	0.337	
Investments in build. & machin. in		
10 regions I-II, IV	-0.218	
11 region III	-0.315	
Observations (N)	52	
Model fitness (R^2)	88%	

Table 5. A variant of Model B resulting from an OLS regression with robust standard errors on deflated pooled agricultural production data in Greece, 2004-16

Explanatory variables	coefficients	
1 Constant	10.0141	
2 Regions I-II, V	ref	
3 Region III	0.366	<i>Notes 1 and 2:</i> As in Table 4. <i>Note 3:</i> P-values (the pare-ntheses specify lines): (4) 0.001, (13) 0.003, (8) 0.007, (5) 0.013, (10) 0.014, (11) 0.036, (9) 0.089, (6) 0.155, (12) 0.313. The rest are equal to 0.000. <i>Source:</i> As in Table 1.
4 Labor (in work units) in region I	2.492	
5 region II	0.424	
6 region III	0.219	
7 region IV	1.038	
8 region I squared	-5.268	
9 Cost of energy in region I	0.296	
10 regions II-III	0.257	
11 region IV	0.390	
Deflated stock of machines in		
12 regions I-II, IV	0.073	
13 region III	0.335	
Observations (N)	52	
Model fitness (R^2)	86%	

¹² The adj. R^2 is 85%. In the previous case it was 88%.

Table 5 provides the best alternative in terms of model fitness when deflated values of Q and K are considered.¹³ The squared value of an input –a feature of the translog expression– is maintained. Once again, the findings suggest E&T heterogeneity across space (higher in Thessaly). However, in this setting: (a) a marginal increase in L increases output, not only in the rest of Greece, but also in north Greece; (b) a marginal increase in K_2 increases output in Thessaly; (c) the north part of Greece, the west part of Greece, and Thessaly operate under DRTS, while the rest of Greece operated under IRTS.

5. CONCLUSIONS

The paper reveals considerable heterogeneity in agricultural production across Greece and advances our understanding on how the country's holdings operated at the regional level.

It turns out that during 2004-16, the average holding generally reduced the amount of labor used, and increased its output, capital, use of land, and the money paid for energy. As it shifted from a more to a less labor-intensive state of production, its labor productivity increased while its capital and land productivity, and the ratio of output over energy expenses decreased. In north Greece the average holding featured more machinery, higher labor productivity and more expenses for feeds, seeds, fertilizers and such inputs; in west Greece it featured higher valued land, higher land productivity and output over energy expenses, as well as capital productivity up to 2010; in Thessaly it featured higher labor productivity during 2004-06 and 2012-16; in Thessaly and in north Greece it featured more hectares and output, and energy expenses; in the rest of Greece it featured more labor, buildings, livestock, and carried out more investments in buildings and machinery; in Thessaly and the rest of Greece it featured higher capital productivity from 2011 on.

One of the models used (Model D) is both irreconcilable with the Cobb-Douglas production function framework, and empirically associated with the lowest goodness of fit. In contrast, the econometric analyses which are based on three translog functions (i.e., extended Cobb-Douglas or extended Cobb-Douglas-like models: i.e., Models A-C, and two variants of B) suggest that: (a) The impact of E&T and of factors not associated with the inputs (i.e., multifactor productivity) was, probably, higher in Thessaly (an outcome observed in Model B and its variants). (b) A marginal increase (reduction) in labor raised (reduced) output in the rest of Greece (the outcome was observed in all five models). (c) A marginal increase (reduction) in the energy bill and, probably, the use of energy raised (reduced) output in the north part of the country (models A-C) and Thessaly (Models A-B and one of B's variants). (d) Thessaly probably exhibited DRTS (Models B-

¹³ It is a specification in which the impact of price inflation is removed. The R^2 and DoF are slightly inferior to that of Table 4.

C and B's variants). The former three findings imply that there was and, perhaps, there is still room for spatially differentiated interventions, and that the decline in agricultural output is reversible. In addition, they suggest that it might be sensible if E&T practices carried out in Thessaly were considered in other regions, and reductions (increases) in the cost of energy and in labor in agricultural production took place if they affected higher output increases (smaller output reductions) elsewhere in the economy. This said, the need for more specificity regarding individual activities and products will require different data and additional analyses.

REFERENCES

- Adom P.K., Djahini-Afawoubo D. M, Mustapha S.A., Fankem S.G., Rifkatu N. 2018. "Does FDI moderate the role of public R&D in accelerating agricultural production in Africa?" *African Journal of Economic and Management Studies*, 9.3: 290-304.
- Bai X., Salim R., Bloch H. 2019. "Environmental Efficiency of Apple Production in China: A Translog Stochastic Frontier Analysis." *Agricultural and Resource Economics Review*, 48.2:199-220.
- Biddle J.E. 2011. "The introduction of the Cobb-Douglas regression and its adoption by agricultural economists." *History of Political Economy*, 43(Suppl. 1): 235-257.
- Breitung J. 2001. "The local power of some unit root tests for panel data." *Advances in Econometrics*. Vol. 15: *Nonstationary Panels, Panel Cointegration, and Dynamic Panels*. Ed. by B. Baltagi, T. Fomby, R. Carter Hill. Bingley UK: Emerald, 161-178.
- Cai H., Yan T. 2019. "Technology efficiency or allocation efficiency." *China Agricultural Economic Review*, 12.2: 237-252.
- Castro N.R., Spolador H.F.S., Marin F.R. 2019. "Assessing the economy-climate relationships for Brazilian agriculture." *Empirical Economics*: 0: 1-28.
- Charnes A., Cooper W.W., Schinnar A.P. 1976. "A theorem on homogeneous functions and extended Cobb-Douglas forms." *Proceedings of the National Academy of Sciences of the United States of America*, 73.10: 3747-3748.
- Chiang A.C. 1984. *Fundamental methods of mathematical economics*. 3rd ed. New York: McGraw-Hill.
- Duffy J., Papageorgiou C. 2000. "A Cross-Country Empirical Investigation of the Aggregate Production Function Specification." *Journal of Economic Growth*, 5.1: 87-120.
- Economou F., Prodromidis P., Skintzi G. 2019. "Large fire disaster and the regional economy: the 2007 case of the Peloponnese." *South-Eastern Europe Journal of Economics*, 17.1: 7-31.
- Erken H., Donselaar P., Thurik R. 2016. "Total factor productivity and the role of entrepreneurship." *Journal of Technology Transfer*, 43.6: 1493-1521.
- European Commission. 2018. *CAP Context Indicators 2014-2020*. Brussels.
- Felipe J., Adams F.G. 2005. "A theory of production. The estimation of the Cobb-Douglas function: A retrospective view." *Eastern Economic Journal*, 31.3: 427-445.
- Ghate C., Glomm G., Streeter J.L. 2016. "Sectoral Infrastructure Investments in an Unbalanced Growing Economy: The Case of Potential Growth in India." *Asian Development Review*, 33.2: 144-166.
- Giang M.H., Xuan T.D., Trung, B.H., Que M.T. 2019. "Total Factor Productivity of Agricultural Firms in Vietnam and Its Relevant Determinants." *Economies*, 7.1: 1-12
- Giannakis E., Bruggeman A. 2017. "Economic crisis and regional resilience: Evidence from Greece." *Papers in Regional Science*, 96.3: 451-477.

- Giouroukeli M. 2010. "Two billion for agricultural investment by the end of 2011." *Stockwatch*. (In Greek.) Issue of Nov. 4.
- Gong T., Battese G.E., Villano, R.A. 2019. "Should smallholder farming in China be discouraged? Panel evidence from Anhui province." *The Journal of Developing Areas*, 53.1: 33-49.
- Gujarati D.N. 1995. *Basic Econometrics*. New York: McGraw-Hill.
- Güvercin D. 2018. "Scale and Elasticity Properties of Turkish Agricultural Production Function: Political Economy Approach." *Sosyoekonomi*, 26.37: 103-116.
- Hadri K. 2000. "Testing for stationarity in heterogeneous panel data." *Econometrics Journal*, 3.2: 148-161.
- Harris R.D.F., Tzavalis E. 1999. "Inference for unit roots in dynamic panels where the time dimension is fixed." *Journal of Econometrics*, 91.2: 201-226.
- Hausman J.A. 1978. "Specification tests in econometrics." *Econometrica*, 46.6: 1251-1271.
- Hlouskova J., Wagner M. 2006. The performance of panel unit root and stationary tests: Results from a large scale simulation study. *Econometric Reviews*, 25.1: 85-117.
- Huber P.J. 1967. The behavior of maximum likelihood estimates under nonstandard conditions. *Proceedings of the fifth Berkeley symposium on mathematical statistics and probability*, vol.1, 221-233.
- Im K.S., Pesaran M.H., Shin Y. 2003. "Testing for unit roots in heterogeneous panels." *Journal of Econometrics*, 115.1: 53-74.
- Jiménez M.I., Abbott P., Foster K. 2018. "Measurement and analysis of agricultural productivity in Colombia." *Ecos de Economía*, 22.47: 4-37
- Kea S., Li H., Pich L. 2016. "Technical Efficiency and Its Determinants of Rice Production in Cambodia." *Economies*, 4.22.
- Lachaud M.A., Bravo-Ureta B.E., Ludena C.E. 2017. "Agricultural productivity in Latin America and the Caribbean in the presence of unobserved heterogeneity and climatic effects." *Climatic Change*, 143.3-4: 445-460.
- Levin A., Lin C.-F., Chu C.-S.J. 2002. "Unit root tests in panel data: Asymptotic and finite-sample properties." *Journal of Econometrics* 108.1: 1-24.
- Lyu S., White F., Lu, Y. 1984. "Estimating Effects of Agricultural Research and Extension Expenditures on Productivity: A Translog Production Function Approach." *Journal of Agricultural and Applied Economics*, 16.2: 1-8.
- Maddala G.S. 2001. *Introduction to Econometrics*, 3rd ed. Chichester: Wiley.
- Mohamed A.A., Rangkakulnuwat P., Paweenawat S.W. 2016. "Decomposition of agricultural productivity growth in Africa." *African Journal of Economic and Management Studies*, 7.4: 497-509.
- Nastis S.A., Michailidis A., Chatzitheodoridis F. 2012. "Climate change and agricultural productivity." *African Journal of Agricultural Research*, 7.35: 4885-4893.
- Njuki E., Bravo-Ureta B.E. 2019. "Examining irrigation productivity in U.S. agriculture using a single-factor approach." *Journal of Productivity Analysis*, 51.2-3: 125-136.
- Nowak A., Kijek T. 2016. "The effect of effect of human capital on labour productivity of farms in Poland." *Studies in Agricultural Economics*, 118.1: 16-21.
- Ogbuabor J.E., Nwosu C.A. 2017. "The Impact of Deposit Money Bank's Agricultural Credit on Agricultural Productivity in Nigeria: Evidence from an Error Correction Model." *International Journal of Economics and Financial Issues*, 7.2: 513-517.
- Ogunlesi A.O., Bokana K.G. 2018. "Dynamics of Agricultural Productivity in Sub-Saharan Africa: A P-ARDL Model Approach." *Acta Universitatis Danubius: Oeconomica*, 14.3: 148-172.
- Osabohien R., Oluwatoyin M., Aderounmu U., Olawande T. 2018. "Greenhouse Gas Emissions and Crop Production in West Africa: Examining the Mitigating Potential of Social Protection." *International Journal of Energy Economics and Policy*, 9.1: 57-66.
- Prodromidis P.I.K. "The Evolution and Composition of the Agricultural Labour Force in Greece: 1998-2008." 2011. *Essays in Economics: Applied Studies on the Greek Economy*.

Edited by S. Savva-Balfoussia, P. Hatzipanayotou and K. Kanellopoulos. Athens: KEPE, pp. 535-576.

- Roy B. 2019. "Temporal and Spatial Variations in Institutional Credit and Its Impact on Agricultural Production in India." *Journal of Economic Policy and Research*, 14.2: 14-30.
- Schettini D., Azzoni C.R. 2018. "Productive efficiency and the future of regional disparities in Brazil." *Nova Economia*, 28.2: 347-379.
- Tzouvelekas E. 2000. "Approximation Properties and Estimation of the Translog Production Function with Panel Data." *Agricultural Economics Review*, 1.1: 33-47.
- Wallis K.F. 1973. *Topics in Applied Econometrics*. London: Gray-Mills.
- White H. 1984. *Asymptotic theory for econometricians*. Orlando: Academic press.
- Wouterse F. 2017. "Empowerment, climate change adaptation, and agricultural production: evidence from Niger." *Climatic Change*, 45.3-4: 367-382.
- Wree P., Sauer J., Wimmer S. 2018. "Economic Evaluation of Yield-Increasing Wheat Seeds Using a Distance Function Approach." *Agricultural and Resource Economics Review*, 47.3: 610-633.
- Yang J., Wang H., Jin S., Chen K., Riedinger J., Peng C. 2016. "Migration, local off-farm employment, and agricultural production efficiency: evidence from China." *Journal of Productivity Analysis*, 45.3: 247-259.
- Zwolak J. 2017. Financial security of final production sold in Polish agriculture. *Actual Problems in Economics*, 191: 188-198.

IN THE SAME SERIES

154. P. Prodromídis, “Bank Financing Across Sectors in Greece at the Time of the Bailout Programs: Trends, Seasonality, Mid-term Fluctuations (June 2010 – December 2018)”, 2020 (In Greek).
153. A. Mitra and A. Chymis, “The Impact of Belgium Federal Reform on Economic Well-being. A Parametric and Non-parametric Synthetic Control Approach”, 2019.
152. S. K. Papaioannou, “Asymmetric Effects of Fiscal Policy on Output of the Greek Economy: Does the Business Cycle Matter?”, 2018.
151. P. Prodromídis, “Deriving the Labor Market Areas of Greece from Community Flows (II)”, 2017 (In Greek). Published in modified form under the title “The regional division of Greece and the functional economic areas estimated from the 2011 commuting patterns” in *European Planning Studies*, vol.26 (10), 2018, pp. 1980-1998.
150. S. K. Papaioannou, “Public Investment Multipliers in EU Countries: Does the Efficiency of Public Sector Matter?”, 2016.
149. I. Konstantakopoulou, “New Evidence on the Export-led-growth Hypothesis in the Southern Euro-zone Countries”, 2016.
148. I. Cholezas and N. C. Kanellopoulos, “Decomposing Gender Unemployment Differentials in Greece”, 2016.
147. E. Athanassiou and E. Tsouma, “The Effects of Financial and Housing Wealth on Private Consumption in Greece”, 2015.
146. I. Konstantakopoulou, “Should Fiscal Policy Be Relaxed in the Eurozone?”, 2015.
145. J. Cavounidis and I. Cholezas, “Labour Force Participation of Female Youth: the Role of Culture”, 2015.
144. N. Vayonis and S. Skoultos, “The Importance of Russia and China Tourism Markets for Global and Greek Inbound Tourism”, 2015 (In Greek).
143. R. Panagiotou, “Western Balkan Accession Policies: An Evaluation of the Greek 2014 EU Presidency”, 2015.
142. T. Mariolis and G. Soklis, “The Sraffian Multiplier for the Greek Economy: Evidence from the Supply and Use Table for the Year 2010”, 2015.
141. S. K. Papaioannou, “Fiscal Multipliers in Euro Area Peripheral Countries: Empirical Evidence from a Structural VAR Model”, 2015.
140. A. Koutroulis, Y. Panagopoulos and E. Tsouma, “Is there an Asymmetric Response in Unemployment Rate to Changes in Output? A Hidden Cointegration Approach”, 2015.
139. A. Chymis and A. Skouloudis, “National CSR and Institutional Conditions: An Exploratory Study”, 2014.
138. Th. Tsekeris, “Network Analysis of Inter-sectoral Relationships and Key Economic Sectors”, 2014.
137. I. Cholezas, “The Greek Labour Market under Conditions of Economic Recession and the «Youth Guarantee»”, 2014 (in Greek).
136. S. Dimelis and S. K. Papaioannou, “Efficiency Impact of ICT and the Role of Product Market Regulation: Sectoral Analysis Across a Panel of EU Economies”, 2014.
135. Y. Panagopoulos and A. Spiliotis, “Reassessing the Asymmetries and Rigidities in the Interest Rate Pass Through Process: A Hidden Co-integration Approach”, 2014. Published in *Credit and Capital Markets*, vol. 48 (3), 2015, pp. 477-500.
134. S. K. Papaioannou, “Long Run Effects of Regulation Across OECD Countries: Panel Data Evidence within a Productivity Convergence Model”, 2014.
133. P. Prodromídis, S. Petros and A. Petralias, “Analyzing the Unleaded Gasoline Retail Price Patterns in Greece: Apr. 2011 – Dec. 2012”, 2013 (in Greek). Published in *South Eastern Europe Journal of Economics*, vol. 12 (2), 2014, pp. 215-241.

132. S. Dimelis and S. K. Papaioannou, "Public Ownership, Entry Regulation and TFP Growth within a Productivity Convergence Model: Industry Level Evidence from South European Countries", 2013.
131. S. Dimelis and S. K. Papaioannou, "Human Capital Effects on Technical Inefficiency: A Stochastic Frontier Analysis a Cross Sectors of the Greek Economy", 2013. Published in *International Review of Applied Economics*, vol. 28 (6), 2014, pp. 797-812.
130. Th. Tsekeris and Kl. Vogiatzoglou, "Regional Specialization and Public Infrastructure Investments: Empirical Evidence from Greece", 2013. Published in modified form in *Regional Science Policy & Practice*, vol. 6 (3), 2014, pp. 265-289.
129. E. Athanassiou, N. Kanellopoulos, R. Karagiannis, I. Katselidis and A. Kotsi, "Measurement of the Intensity of Regulations in Professions and Economic Activities in Greece via Regulation Indices", 2013 (in Greek).
128. D. Papageorgiou and A. Kazanas, "A Dynamic Stochastic General Equilibrium Model for a Small Open Economy: Greece", 2013.
127. Th. Tsekeris, "Measurements of Intra- and Inter-sectoral Dependencies of Public Investments with Budget Constrains", 2013. Published in modified form in *Socio-Economic Planning Sciences*, vol. 48 (4), 2014, pp. 263-272.
126. S. K. Papaioannou, "Economic Growth in Greece: Medium Term Trends and Future Prospects", 2012.
125. Y. Panagopoulos and A. Spiliotis, "Is the Eurozone Homogeneous and Symmetric? An Interest Rate Pass-through Approach Before and During the Recent Financial Crisis", 2012.
124. D. Papageorgiou, T. Efthimiadis and I. Konstantakopoulou, "Effective Tax Rates in Greece", 2012.
123. I. Konstantakopoulou and E. G. Tsionas, "ABC's of the 2008 Recession: Robust and Reliable International Evidence on the Austrian Theory of the Business Cycle", 2012.
122. K. Vogiatzoglou and Th. Tsekeris, "Spatial Agglomeration of Manufacturing in Greece", 2011. Published in *European Planning Studies*, vol. 21, 2013, pp. 1853-1872.
121. N. C. Kanellopoulos, "Disability and Labour Force Participation in Greece: A Microeconometric Analysis", 2011.
120. K. Athanassouli, "Transition Professionnelle et Rémunérations des Jeunes Raires Grecs: Une Mise en Évidence des Stratégies Par Genre et des Tendances des Pays de l'OCDE", 2011.
119. A. Caraballo and T. Efthimiadis, "Is 2% an Optimal Inflation Rate? Evidence from the Euro Area", 2011.
118. P. Prodromidis and Th. Tsekeris, "Probing into Greece's 2007-2013 National Strategic Reference Framework. A Suggestion to Review the Regional Allocation of Funds", 2011 (in Greek).
117. P. Paraskevaidis, "The Economic Role of the EU in the Global Economy: A Comparative Analysis", 2011.
116. E. A. Kaditi and E. I. Nitsi, "Recent Evidence on Taxpayers' Reporting Decision in Greece: A Quantile Regression Approach", 2011.
115. T. Efthimiadis and P. Tsintzos, "The Share of External Debt and Economic Growth", 2011.
114. E. Tsouma, "Predicting Growth and Recessions Using Leading Indicators: Evidence from Greece", 2010.
113. A. Chymis, I. E. Nikolaou and K. Evangelinos, "Environmental Information, Asymmetric Information and Financial Markets: A Game-Theoretic Approach", 2010. Published in *Environmental Modelling and Assessment*, vol. 18 (6), 2013, pp. 615-628.
112. E. A. Kaditi and E. I. Nitsi, "Applying Regression Quantiles to Farm Efficiency Estimation", 2010.
111. I. Cholezas, "Gender Earnings Differentials in Europe", 2010.

110. Th. Tsekeris, "Greek Airports: Efficiency Measurement and Analysis of Determinants", 2010. Published in *Journal of Air Transport Management*, vol.17 (2), 2011, pp. 139-141.
109. S. P. Dimelis and S. K. Papaioannou, "Technical Efficiency and the Role of Information Technology: A Stochastic Production Frontier Study Across OECD Countries", 2010.
108. I. Cholezas, "Education in Europe: Earnings Inequality, Ability and Uncertainty", 2010.
107. N. Benos, "Fiscal Policy and Economic Growth: Empirical Evidence from EU Countries", 2009.
106. E. A. Kaditi and E. I. Nitsi, "A Two-stage Productivity Analysis Using Bootstrapped Malmquist Index and Quantile Regression", 2009.
105. St. Karagiannis and N. Benos, "The Role of Human Capital in Economic Growth: Evidence from Greek Regions", 2009.
104. E. Tsouma, "A Coincident Economic Indicator of Economic Activity in Greece", 2009.
103. E. Athanassiou, "Fiscal Policy and the Recession: The Case of Greece", 2009. Published in *Intereconomics: Review of European Economic Policy*, vol. 44 (6), 2009, pp. 364-372.
102. St. Karagiannis. Y. Panagopoulos and A. Spiliotis, "Modeling Banks' Lending Behavior in a Capital Regulated Framework", 2009. Published in *Metroeconomica*, vol. 63 (2), 2012, pp. 385-416.
101. Th. Tsekeris, "Public Expenditure Competition in the Greek Transport Sector: Inter-modal and Spatial Considerations", 2009. Published in *Environment and Planning A*, vol. 43 (8), 2011, pp. 1981-1998.
100. N. Georgikopoulos and C. Leon, "Stochastic Shocks of the European and the Greek Economic Fluctuations", 2009.
99. P.-I. Prodromidis, "Deriving Labor Market Areas in Greece from Computing Flows", 2008. Published under the title "Identifying Spatial Labor Markets in Greece from the 2001 Travel-to-Work Patterns" in *South Eastern Europe Journal of Economics*, vol. 8 (1), 2010, pp. 111-128.
98. Y. Panagopoulos and P. Vlamis, "Bank Lending, Real Estate Bubbles and Basel II", 2008. Published in *Journal of Real Estate Literature*, vol. 17 (2), 2009, pp. 295-310.
97. Y. Panagopoulos, "Basel II and the Money Supply Process: Some Empirical Evidence from the Greek Banking System (1995-2006)", 2007. Published in *Applied Economics Letters*, vol. 17 (10), 2010, pp. 973-976.
96. N. Benos and St. Karagiannis, "Growth Empirics: Evidence from Greek Regions", 2007.
95. N. Benos and St. Karagiannis, "Convergence and Economic Performance in Greece: New Evidence at Regional and Prefecture Level", 2007.
94. Th. Tsekeris, "Consumer Demand Analysis of Complementarities and Substitutions in the Greek Passenger Transport Market", 2007. Published in *International Journal of Transport Economics*, vol. 35 (3), 2008, pp. 415-449.
93. Y. Panagopoulos, I. Reziti and A. Spiliotis, "Monetary and Banking Policy Transmission Through Interest Rates: An Empirical Application to the USA, Canada, U.K. and European Union", 2007. Published in *International Review of Applied Economics*, vol. 24 (2), 2010, pp. 119-136.
92. W. Kafouros and N. Vagionis, "Greek Foreign Trade with Five Balkan States During the Transition Period 1993-2000: Opportunities Exploited and Missed", 2007.
91. St. Karagiannis, "The Knowledge-Based Economy, Convergence and Economic Growth: Evidence from the European Union", 2007.
90. Y. Panagopoulos, "Some Further Evidence upon Testing Hysteresis in the Greek Phillips-type Aggregate Wage Equation", 2007.
89. N. Benos, "Education Policy, Growth and Welfare", 2007.
88. P. Baltzakis, "Privatization and Deregulation", 2006 (in Greek).
87. Y. Panagopoulos and I. Reziti, "The Price Transmission Mechanism in the Greek Food Market: An empirical Approach", 2006. Published under the title "Asymmetric Price

- Transmission in the Greek Agri-Food Sector: Some Tests” in *Agribusiness*, vol. 24 (1), 2008, pp. 16-30.
86. P.-I. Prodromídis, “Functional Economies or Administrative Units in Greece: What Difference Does It Make for Policy?”, 2006. Published in *Review of Urban & Regional Development Studies*, vol. 18 (2), 2006, pp. 144-164.
 85. P.-I. Prodromídis, “Another View on an Old Inflation: Environment and Policies in the Roman Empire up to Diocletian’s Price Edict”, 2006. Published under the title “Economic Environment, Policies and Inflation in the Roman Empire up to Diocletian’s Price Edict” in *Journal of European Economic History*, vol. 38 (3), 2009, pp. 567-605.
 84. E. Athanassiou, “Prospects of Household Borrowing in Greece and their Importance for Growth”, 2006. Published in *South-Eastern Europe Journal of Economics*, vol. 5, 2007, pp. 63-75.
 83. G. C. Kostelenos, “La Banque Nationale de Grèce et ses Statistiques Monétaires (1841-1940)”, 2006. Published in *Mesurer la monnaie. Banques centrales et construction de l’autorité monétaire (XIX^e-XX^e siècle)*, Paris: Edition Albin Michel, 2005, pp. 69-86.
 82. P. Baltzakis, “The Need for Industrial Policy and its Modern Form”, 2006 (in Greek).
 81. St. Karagiannis, “A Study of the Diachronic Evolution of the EU’s Structural Indicators Using Factorial Analysis”, 2006.
 80. I. Resiti, “An Investigation into the Relationship between Producer, Wholesale and Retail Prices of Greek Agricultural Products”, 2005.
 79. Y. Panagopoulos and A. Spiliotis, “An Empirical Approach to the Greek Money Supply”, 2005.
 78. Y. Panagopoulos and A. Spiliotis, “Testing Alternative Money Theories: A G7 Application”, 2005. Published in *Journal of Post Keynesian Economics*, vol. 30 (4), 2008, pp. 601-622.
 77. I. A. Venetis and E. Emmanuilidi, “The Fatness in Equity Returns. The Case of Athens Stock Exchange”, 2005.
 76. I. A. Venetis, I. Paya and D. A. Peel, “Do Real Exchange Rates “Mean Revert” to productivity? A Nonlinear Approach”, 2005. Published in *Oxford Bulletin of Economics and Statistics*, vol. 65 (4), 2003, pp. 421-437.
 75. C. N. Kanellopoulos, “Tax Evasion in Corporate Firms: Estimatees from the Listed Firms in Athens Stock Exchange in 1990s ”, 2002 (in Greek).
 74. N. Glytsos, “Dynamic Effects of Migrant Remittances on Growth: An Econometric Model with an Application to Mediterranean Countries”, 2002. Published under the title “The Contribution of Remittances to Growth: A Dynamic Approach and Empirical Analysis” in *Journal of Economic Studies*, vol, 32 (6), 2005, pp. 468-496.
 73. N. Glytsos, “A model of Remittance Determination Applied to Middle East and North Africa Countries”, 2002.
 72. Th. Simos, “Forecasting Quarterly GDP Using a System of Stochastic Differential Equations”, 2002.
 71. C. N. Kanellopoulos and K. G. Mavromaras, “Male-Female Labour Market Participation and Wage Differentials in Greece”, 2000. Published in *Labour*, vol. 16 (4), 2002, pp. 771-801.
 70. St. Balfoussias and R. De Santis, “The Economic Impact of the Cap Reform on the Greek Economy: Quantifying the Effects of Inflexible Agricultural Structures”, 1999.
 69. M. Karamessini and O. Kaminioti, “Labour Market Segmentation in Greece: Historical Perspective and Recent Trends”, 1999.
 68. S. Djajic, S. Lahiri and P. Raimondos-Moller, “Logic of Aid in an Intertemporal Setting”, 1997.

67. St. Makrydakis, "Sources of Macroeconomic Fluctuations in the Newly Industrialized Economies: A Common Trends Approach", 1997. Published in *Asian Economic Journal*, vol. 11 (4), 1997, pp. 361-383.
66. G. Petrakos and N. Christodoulakis, "Economic Development in the Balkan Countries and the Role of Greece: From Bilateral Relations to the Challenge of Integration", 1997.
65. C. Kanellopoulos, "Pay Structure in Greece 1974-1994", 1997.
64. M. Chletsos, Chr. Kollias and G. Manolas, "Structural Economic Changes and their Impact on the Relationship Between Wages, Productivity and Labour Demand in Greece", 1997.
63. M. Chletsos, "Changes in Social Policy-social Insurance, Restructuring the Labour Market and the Role of the State in Greece in the Period of European Integration", 1997.
62. M. Chletsos, "Government Spending and Growth in Greece 1958-1993: Some Preliminary Empirical Results", 1997.
61. M. Karamessini, "Labour Flexibility and Segmentation of the Greek Labour Market in the Eighties: Sectoral Analysis and Typology", 1997.
60. Chr. Kollias and St. Makrydakis, "Is there a Greek-Turkish Arms Race? Evidence from Cointegration and Causality Tests", 1997. Published in *Defence and Peace Economics*, vol. 8, 1997, pp. 355-379.
59. St. Makrydakis, "Testing the Intertemporal Approach to Current Account Determination: Evidence from Greece", 1996. Published in *Empirical Economics*, vol. 24 (2), 1999, pp. 183-209.
58. Chr. Kollias and St. Makrydakis, "The Causal Relationship Between Tax Revenues and Government Spending in Greece: 1950-1990", 1996. Published in *The Cyprus Journal of Economics*, vol. 8 (2), 1995, pp. 120-135.
57. Chr. Kollias and A. Refenes, "Modeling the Effects of Defence Spending Reductions on Investment Using Neural Networks in the Case of Greece", 1996.
56. Th. Katsanevas, "The Evolution of Employment and Industrial Relations in Greece (from the Decade of 1970 up to the Present)", 1996 (in Greek).
55. D. Dogas, "Thoughts on the Appropriate Stabilization and Development Policy and the Role of the Bank of Greece in the Context of the Economic and Monetary Union (EMU)", 1996 (in Greek).
54. N. Glytsos, "Demographic Changes, Retirement, Job Creation and Labour Shortages in Greece: An Occupational and Regional Outlook", 1996. Published in *Journal of Economic Studies*, vol. 26 (2-3), 1999, pp. 130-158.
53. N. Glytsos, "Remitting Behavior of "Temporary" and "Permanent" Migrants: The Case of Greeks in Germany and Australia", 1996. Published in *Labour*, vol. 11 (3), 1997, pp. 409-435.
52. V. Stavrinou and V. Droucopoulos, "Output Expectations, Productivity Trends and Employment: The Case of Greek Manufacturing", 1996. Published in *European Research Studies*, vol. 1, (2), 1998, pp. 93-122.
51. A. Balfoussias and V. Stavrinou, "The Greek Military Sector and Macroeconomic Effects of Military Spending in Greece", 1996. Published in N. P. Gleditsch, O. Bjerkholt, A. Cappelen, R. P. Smith and J. P. Dunne (eds.), *In the Peace Dividend*, Amsterdam: North-Holland, 1996, pp. 191-214.
50. J. Henley, "Restructuring Large Scale State Enterprises in the Republics of Azerbaijan, Kazakhstan, the Kyrgyz Republic and Uzbekistan: The Challenge for Technical Assistance", 1995.
49. C. Kanellopoulos and G. Psacharopoulos, "Private Education Expenditure in a "Free Education" Country: The Case of Greece", 1995. Published in *International Journal of Educational Development*, vol. 17 (1), 1997, pp. 73-81.

48. G. Kouretas and L. Zarangas, "A Cointegration Analysis of the Official and Parallel Foreign Exchange Markets for Dollars in Greece", 1995. Published in *International Journal of Finance and Economics*, vol. 3, 1998, pp. 261-276.
47. St. Makrydakias, E. Tzavalis and A. Balfoussias, "Policy Regime Changes and the Long-Run Sustainability of Fiscal Policy: An Application to Greece", 1995. Published in *Economic Modelling*, vol. 16 (1), 1999, 71-86.
46. N. Christodoulakis and S. Kalyvitis, "Likely Effects of CSF 1994-1999 on the Greek Economy: An ex ante Assessment Using an Annual Four-Sector Macroeconometric Model", 1995.
45. St. Thomadakis and V. Droucopoulos, "Dynamic Effects in Greek Manufacturing: The Changing Shares of SMEs, 1983-1990", 1995. Published in *Review of Industrial Organization*, vol. 11 (1), 1996, pp. 69-78.
44. P. Mourdoukoutas, "Japanese Investment in Greece", 1995 (in Greek).
43. V. Rapanos, "Economies of Scale and the Incidence of the Minimum Wage in the Less Developed Countries", 1995. Published under the title "Minimum Wage and Income Distribution in the Harris-Todaro Model" in *Journal of Economic Development*, vol. 30 (1), 2005, pp. 1-14.
42. V. Rapanos, "Trade Unions and the Incidence of the Corporation Income Tax", 1995.
41. St. Balfoussias, "Cost and Productivity in Electricity Generation in Greece", 1995.
40. V. Rapanos, "The Effects of Environmental Taxes on Income Distribution", 1995. Published in *European Journal of Political Economy*, vol. 11 (3), 1995, pp. 487-501.
39. V. Rapanos, "Technical Change in a Model with Fair Wages and Unemployment", 1995. Published in *International Economic Journal*, vol. 10 (4), 1996, pp. 99-121.
38. M. Panopoulou, "Greek Merchant Navy, Technological Change and Domestic Shipbuilding Industry from 1850 to 1914", 1995. Published in *The Journal of Transport History*, vol. 16 (2), 1995, pp. 159-178.
37. C. Vergopoulos, "Public Debt and its Effects", 1994 (in Greek).
36. C. Kanellopoulos, "Public-Private Wage Differentials in Greece", 1994. Published in *Applied Economics*, vol. 29, 1997, pp. 1023-1032.
35. Z. Georganta, K. Kotsis and Emm. Kounaris, "Measurement of Total Factor Productivity in the Manufacturing Sector of Greece, 1980-1991", 1994.
34. E. Petrakis and A. Xepapadeas, "Environmental Consciousness and Moral Hazard in International Agreements to Protect the Environment", 1994. Published in *Journal Public Economics*, vol. 60, 1996, pp. 95-110.
33. C. Carabatsou-Pachaki, "The Quality Strategy: A Viable Alternative for Small Mediterranean Agricultures", 1994.
32. Z. Georganta, "Measurement Errors and the Indirect Effects of R & D on Productivity Growth: The U.S. Manufacturing Sector", 1993.
31. P. Paraskevaidis, "The Economic Function of Agricultural Cooperative Firms", 1993 (in Greek).
30. Z. Georganta, "Technical (In) Efficiency in the U.S. Manufacturing Sector, 1977-1982", 1993.
29. H. Dellas, "Stabilization Policy and Long Term Growth: Are they Related?", 1993.
28. Z. Georganta, "Accession in the EC and its Effect on Total Factor Productivity Growth of Greek Agriculture", 1993.
27. H. Dellas, "Recessions and Ability Discrimination", 1993.
26. Z. Georganta, "The Effect of a Free Market Price Mechanism on Total Factor Productivity: The Case of the Agricultural Crop Industry in Greece", 1993. Published in *International Journal of Production Economics*, vol. 52, 1997, pp. 55-71.
25. A. Gana, Th. Zervou and A. Kotsi, "Poverty in the Regional of Greece in the Late 80s", 1993 (in Greek).

24. P. Paraskevaïdis, "Income Inequalities and Regional Distribution of the Labour Force Age Group 20-29", 1993 (in Greek).
23. C. Eberwein and Tr. Kollintzas, "A Dynamic Model of Bargaining in a Unionized Firm with Irreversible Investment", 1993. Published in *Annales d' Economie et de Statistique*, vol. 37/38, 1995, pp. 91-115.
22. P. Paraskevaïdis, "Evaluation of Regional Development Plans in the East Macedonia-Thrace's and Crete's Agricultural Sector", 1993 (in Greek).
21. P. Paraskevaïdis, "Regional Typology of Farms", 1993 (in Greek).
20. St. Balfoussias, "Demand for Electric Energy in the Presence of a Two-block Declining Price Schedule", 1993.
19. St. Balfoussias, "Ordering Equilibria by Output or Technology in a Non-linear Pricing Context", 1993.
18. C. Carabatsou-Pachaki, "Rural Problems and Policy in Greece", 1993.
17. Cl. Efstratoglou, "Export Trading Companies: International Experience and the Case of Greece", 1992 (in Greek).
16. P. Paraskevaïdis, "Effective Protection, Domestic Resource Cost and Capital Structure of the Cattle Breeding Industry", 1992 (in Greek).
15. C. Carabatsou-Pachaki, "Reforming Common Agricultural Policy and Prospects for Greece", 1992 (in Greek).
14. C. Carabatsou-Pachaki, "Elaboration Principle/Evaluation Criteria for Regional Programmes", 1992 (in Greek).
13. G. Agapitos and P. Koutsouvelis, "The VAT Harmonization within EEC: Single Market and its Impacts on Greece's Private Consumption and Vat Revenue", 1992.
12. C. Kanellopoulos, "Incomes and Poverty of the Greek Elderly", 1992.
11. D. Maroulis, "Economic Analysis of the Macroeconomic Policy of Greece during the Period 1960-1990", 1992 (in Greek).
10. V. Rapanos, "Joint Production and Taxation", 1992. Published in *Public Finance/Finances Publiques*, vol. 48 (3), 1993, pp. 422-429.
9. V. Rapanos, "Technological Progress, Income Distribution, and Unemployment in the Less Developed Countries", 1992. Published in *Greek Economic Review*, 14 (2), 1992, pp. 179-192.
8. N. Christodoulakis, "Certain Macroeconomic Consequences of the European Integratrion", 1992 (in Greek).
7. L. Athanassiou, "Distribution Output Prices and Expenditure", 1992.
6. J. Geanakoplos and H. Polemarchakis, "Observability and Constrained Optima", 1992.
5. N. Antonakis and D. Karavidas, "Defense Expenditure and Growth in LDCs: The Case of Greece, 1950-1985", 1990.
4. C. Kanellopoulos, "The Underground Economy in Greece: What Official Data Show", (in Greek 1990 - in English 1992). Published in *Greek Economic Review*, vol. 14 (2), 1992, pp. 215-236.
3. J. Dutta and H. Polemarchakis, "Credit Constraints and Investment Finance: Evidence from Greece", 1990. Published in M. Monti (ed.), *Fiscal Policy, Economic Adjustment and Financial Markets*, International Monetary Fund, 1989.
2. L. Athanassiou, "Adjustments to the Gini Coefficient for Measuring Economic Inequality", 1990.
1. G. Alogoskoufis, "Competitiveness, Wage Rate Adjustment and Macroeconomic Policy in Greece", 1990 (in Greek). Published in *Applied Economics*, vol. 29, 1997, pp. 1023-1032.